

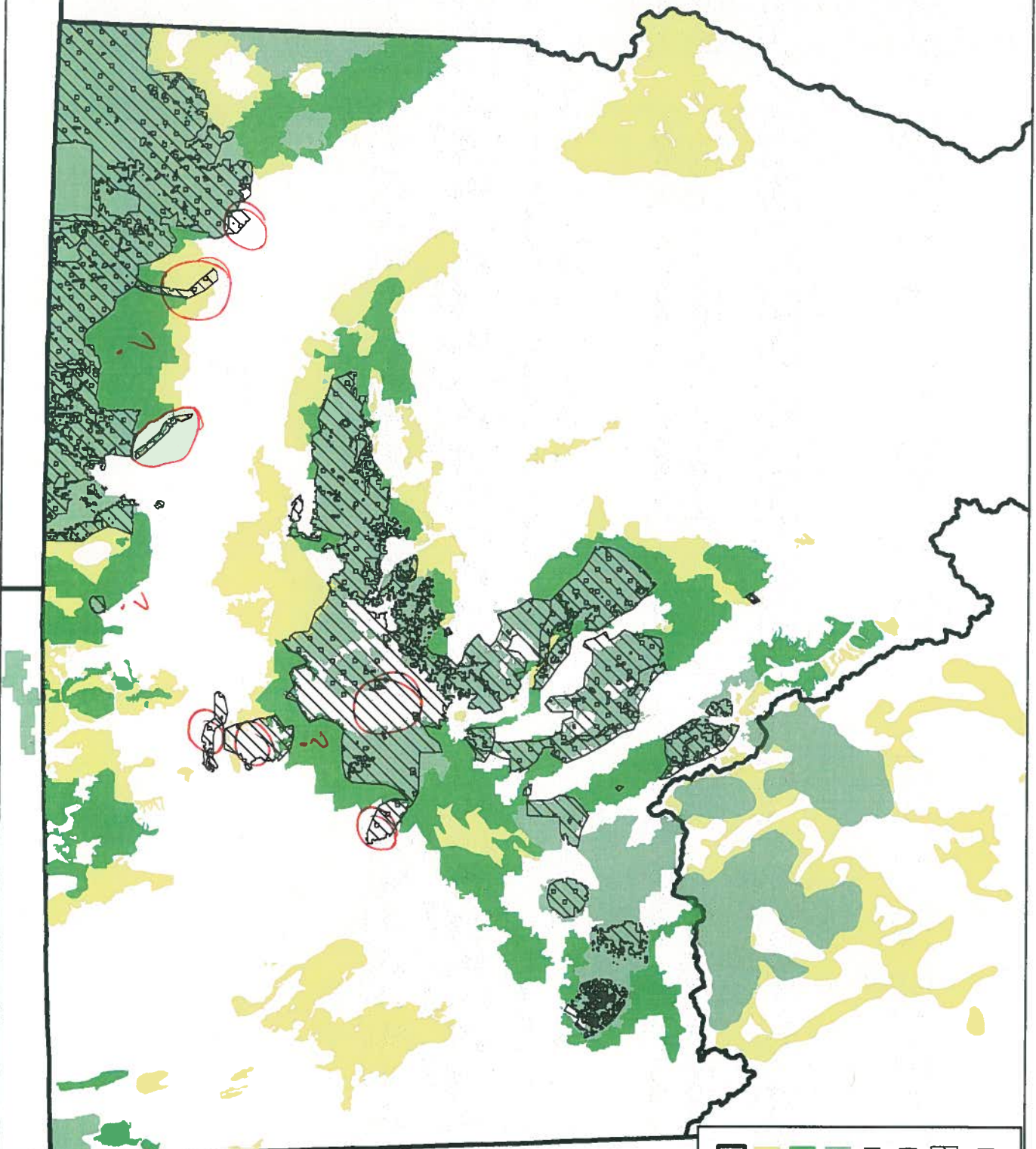
From: [Hendricks, Kathleen](#)
To: [Pat Deibert](#)
Subject: draft map
Date: Thursday, February 26, 2015 12:30:17 PM
Attachments: [DOC.PDF](#)

our GIS person put this together based on layers provided by Lara I believe.....we would like to excise areas where federal lands overlaps onto general and non-habitat.



PHMA and Other Protected Federal Lands in Idaho with BLM Core/Important/General Sage-grouse Habitat

DRAFT
INTERNAL
USE ONLY



Legend

- PHMA/Protected Federal Lands
- BLM CIG Habitat - 05272014
- Management**
- Core
- Important
- General
- States

PHMA coarsly sketched from PDF.
USFWS IFWO
Feb 19 2015

1
2
3